

DOCKLEVELER SURVEY SHEET

Inquiry Date: _____ Due Date: _____
 Contact: _____
 Company: _____
 Phone: _____
 Fax: _____
 E-mail: _____

**PLEASE CHOOSE THE DESIRED
DOCKLEVELER TYPE:**

**MECHANICAL (RR) _____
 OR
 ELECTRIC HYDRAULIC (EH) _____**

PIT SIZE

Width: _____
 Length: _____
 Height (@ front): _____
 Height (@ rear): _____

CAPACITY: _____

PREVIOUS QUOTE OR ORDER #: _____

OPTIONS:

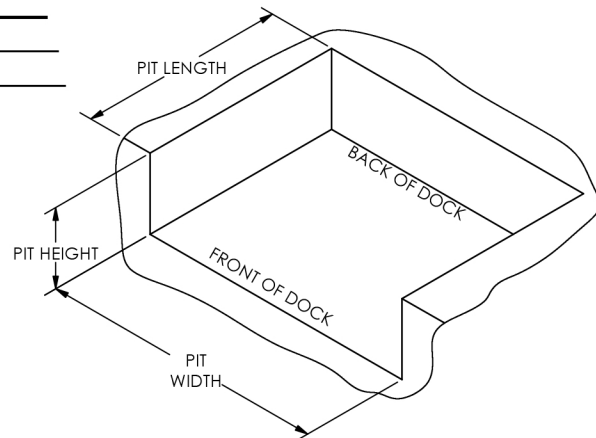
- ____ **SPO** (SHALLOW PIT OPTION): ANY PIT SHALLOWER THAN 24"; 17 1/2" MIN. DEPTH
 ____ **18"LIP/6**: 18"L LIP FOR 6' WIDE DOCKLEVELER
 ____ **18"LIP/7**: 18"L LIP FOR 7' WIDE DOCKLEVELER
 ____ **ES**: EMERGENCY STOPS (RR UNITS ONLY)
 ____ **CWO**: COLD WEATHER OIL (EH UNITS ONLY)
 ____ **FI**: UNDER-DECK FOAM INSULATION
 ____ **CAS**: CURB ANGLE SET
 ____ **VCC-115-1**: VOLTAGE CHANGE OPTION TO 115V SINGLE PHASE AC POWER
 ____ **VCC-208/230-1**: VOLTAGE CHANGE OPTION TO 208/230V SINGLE PHASE AC POWER
 ____ **VCC-208/230-3**: VOLTAGE CHANGE OTPTION TO 208/230V THREE PHASE AC POWER
 ____ STEEL SHELL FOR POUR IN PLACE INSTALLATION
 ____ DUAL VINYL WEATHERSTRIPPING
 ____ 1" REPLACEABLE BRUSH WEATHERSTRIPPING
 ____ 1 1/2" REPLACEABLE BRUSH WEATHERSTRIPPING

SPECIAL REQUESTS:

Additional Notes:

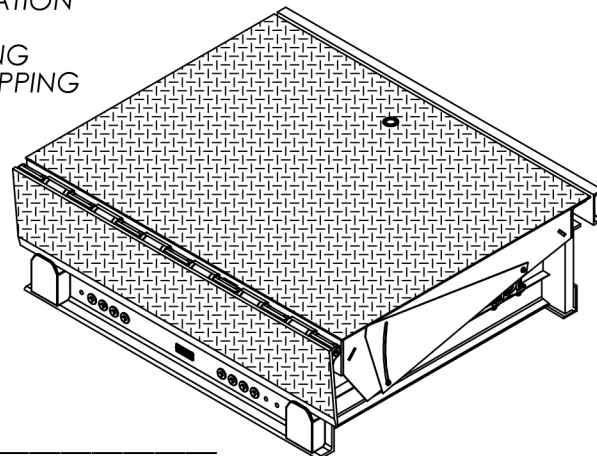
Quote options:

____ Exactly as specified _____ Cheapest / Closest to Vestil standard
 ____ Quickest to ship
 Requested Delivery Date: _____



**PLEASE CIRCLE SPECIFICATIONS
(EH DOCKLEVELERS ONLY):**

POWER	AC	DC	*AIR/OIL
MOTOR VOLTAGE	115	208	230 460
DEDICATED CIRCUIT REQUIRED			
MOTOR PHASE	SINGLE	THREE	
CONTROL	HAND	*FOOT	
NOTE: 460V 3 PHASE IS STANDARD			



MATERIAL FLOW AND CONVEYOR SYSTEMS Toll Free: 1-800-338-1382 | Fax: 503-684-5133

*All options may not be available on all models